



ARIA ADURO



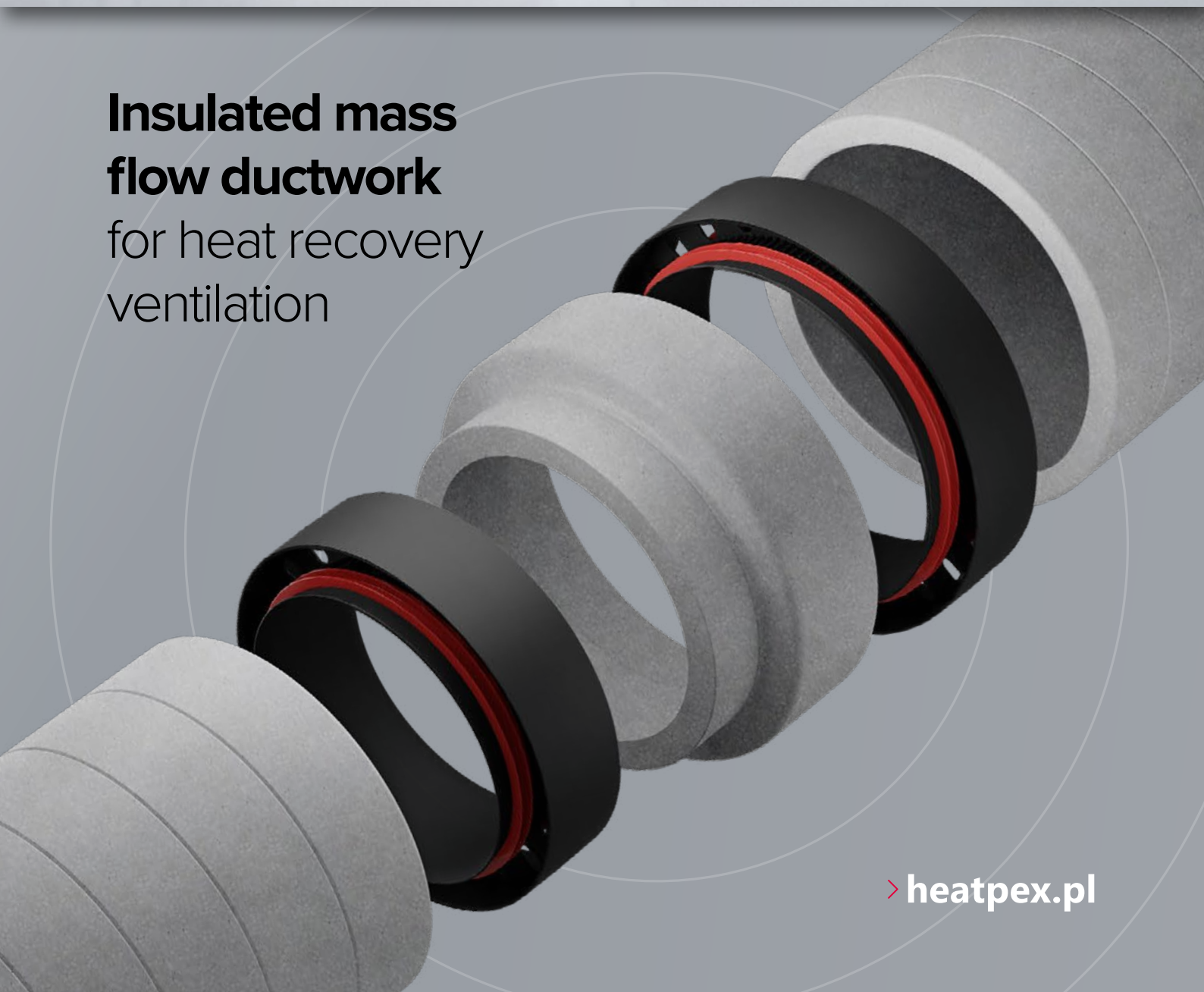
Versatility with
3 diameters

125
mm

160
mm

200
mm

**Insulated mass
flow ductwork**
for heat recovery
ventilation



> heatpex.pl

Discover all advantages
of ARIA ADURO

2 x FASTER
INSTALLATION

ARIA ADURO is **9 times lighter** than a traditional metal system, making installation much easier



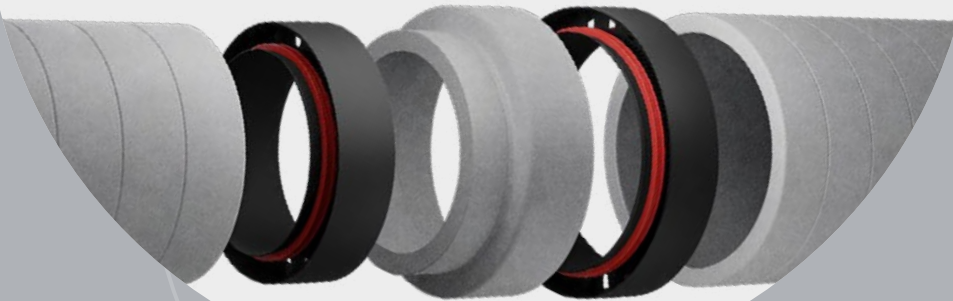
ONE[®]
CLICK
technology

Proven solution:
OneClick technology

Thanks to the application of OneClick technology known from HEATPEX ARIA air distribution system, **connecting ARIA ADURO elements together is faster and easier than ever before.**

2 X LOWER
AIRFLOW
RESISTANCE

compared with flexible ducts:
quiet operation and lower maintenance costs



ARIA ADURO system is built from **rigid materials with smooth inner walls**



No risk of deformation during assembly – **constant cross-section all along**



Low noise level

HEATPEX
ARIA

ARIA
CONNECT

Semi-rigid ducting
system for air
distribution



ARIA
ADURO

Insulated
ventilation
ductwork

Complete system

ARIA ADURO is 100% compatible with HEATPEX ARIA air distribution semi-rigid ducting system

Standard dimensions

ARIA ADURO fits to most heat recovery units available on the market, its dimensions coherent with traditional ventilation systems. Internal dimensions comply with EN 1506:2007 standards.

ARIA



Elements of ARIA ADURO system



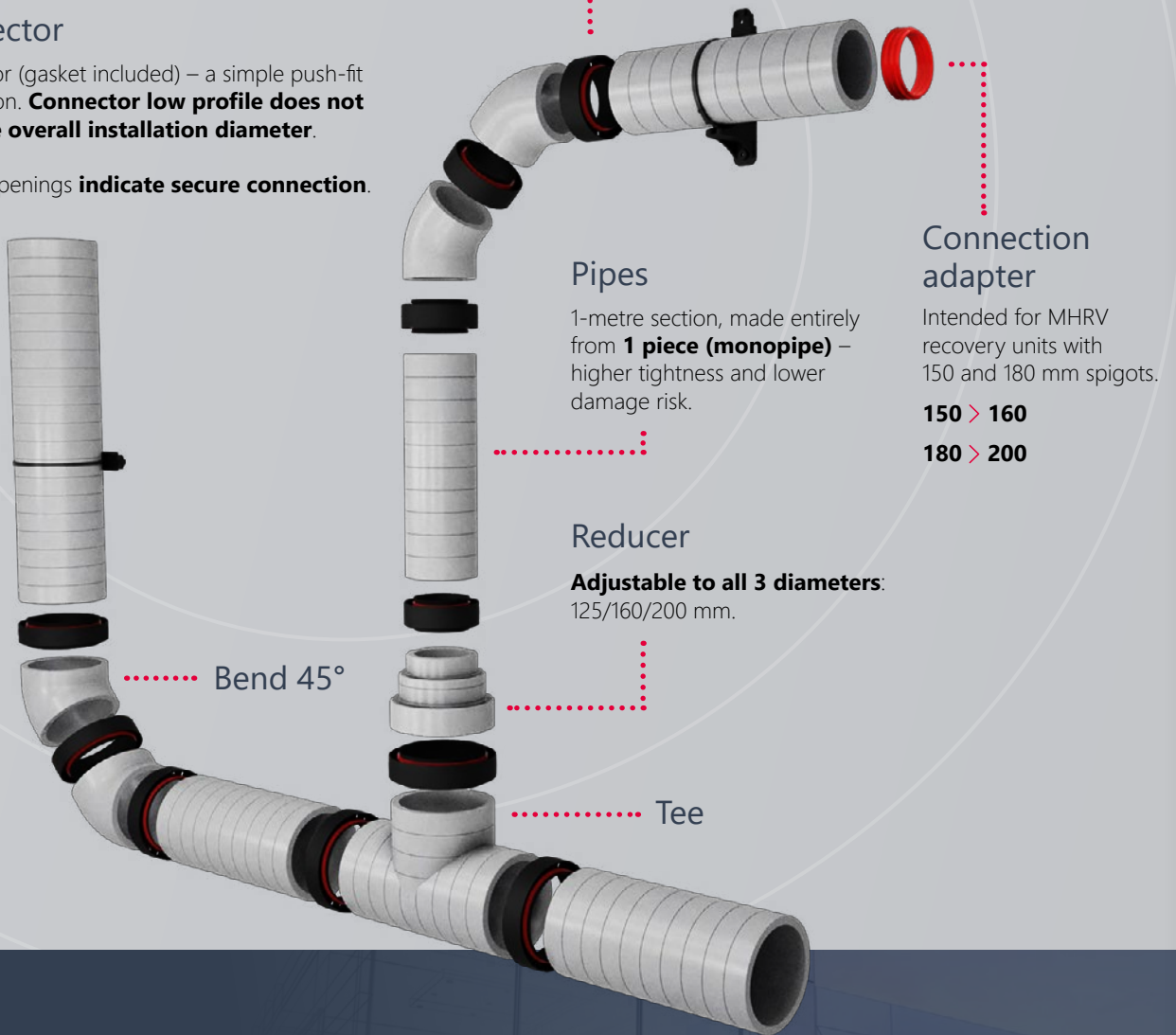
Connector

Connector (gasket included) – a simple push-fit connection. **Connector low profile does not alter the overall installation diameter.**

Special openings **indicate secure connection.**



Mounting bracket with adjustable band clamp



Connection adapter

Intended for MHRV recovery units with 150 and 180 mm spigots.

150 > 160

180 > 200

Pipes

1-metre section, made entirely from **1 piece (monopipe)** – higher tightness and lower damage risk.

Reducer

Adjustable to all 3 diameters:
125/160/200 mm.

Bend 45°

Tee

Application of ARIA ADURO

Alternative to spiro pipes.

Transfer of large air flows between:

> air intake, outlet grille and heat recovery unit

AND

> heat recovery unit and internal air distribution ducting system

High insulating properties

Light, durable and airtight material with excellent insulating properties

(EPS – expanded polystyrene), enriched with graphite – resistant to fungi, mould, and bacteria. Raw materials used along with added graphite **significantly increase the insulation coefficient: $\lambda=0.029$ (W/mK)**, especially when compared to wool-insulated metal pipes.



125
mm

160
mm

200
mm

Versatile system: 3 diameters

Reducer adjustable
to all diameters



Original mounting brackets for quick installation

- > **Quick installation** – simply attach the bracket to the surface, slide the pipe through and tighten the band.
- > **Modularity** – brackets, connected in series or in parallel, can be used for routing two or more ducts next to each other.
- > Ultra-light elements **require a minimum number** of mounting brackets.
- > **Versatility** – one size bracket for all 3 diameters.






5 cm




Effortless cutting – simple setup

Markers (every 5 cm) help cut the pipe to required length. Wall thickness of only 17 mm lets you easily cut the pipe, using a simple knife

Technical data: **System elements**


Name	Designation	Diameter		Length	Material	Catalogue number
		inner	outer			
		mm	mm	mm		
Pipe 1 m 	ADR 125	125	159	1000	EPS	529 125 001
	ADR160	160	194			529 160 001
	ADR 200	200	234			529 200 001
Bend 45° 	ADK 125	125	159	213	EPS	529 125 901
	ADK160	160	194	226		529 160 901
	ADK 200	200	234	240		529 200 901
Tee 	ADT 125	125	159	380	EPS	529 125 801
	ADT160	160	194			529 160 801
	ADT 200	200	234			529 200 801
Damper 	ADP 125	125	159	250	EPS, galvanized steel	529 125 601
	ADP160	160	194			529 160 601
	ADP 200	200	234			529 200 601
Connector 	ADL 125	125		70	PP, EPDM	529 125 701
	ADL160	160				529 160 701
	ADL 200	200				529 200 701
Reducer 	ADD 125/160/200	125/160/200		167	EPS	520 102 001
Mounting bracket 	ADU 125/160/200	125/160/200		300	PP, nylon	520 101 001
NEW HRV unit connection adapter 	AKR 150/160	150/160		40	EPDM	520 116 001
	AKR 180/200	180/200		40	EPDM	520 117 001

Technical data: **Accessories**

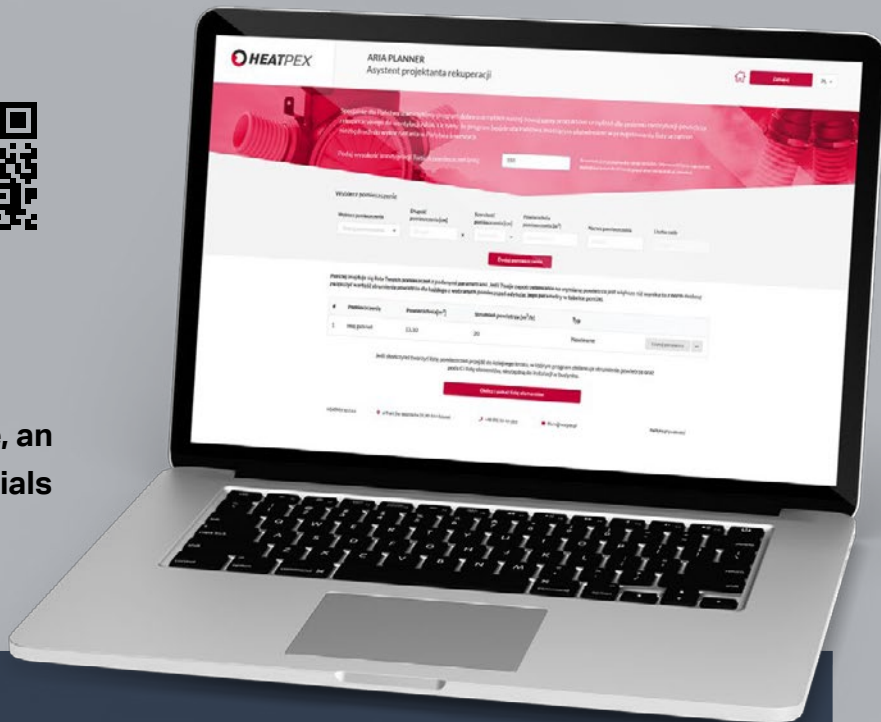
Name	Designation	Diameter	Length	Material	Catalogue number
		mm	mm		
Duct silencer 	BL 125	125	1000	Aluminum-polyester jacket, galvanized steel, EPDM gaskets, glass wool insulation	520 103 001
	BL160	160			520 104 001
	BL 200	200			520 105 001
Air intake/outlet grille - hooded 	AN 125	125	-	Stainless steel	520 106 001
	AN160	160			520 107 001
	AN 200	200			520 108 001
Air intake/outlet grille - flat 	KA 125	125	-	Stainless steel	520 109 001
	KA160	160			520 110 001
	KA 200	200			520 111 001

ARIA Planner



 **Design a heat recovery system in 10 minutes!**

ARIA PLANNER – selection software, an easy tool that creates a bill of materials needed for each HRV project.



3 SIMPLE STEPS

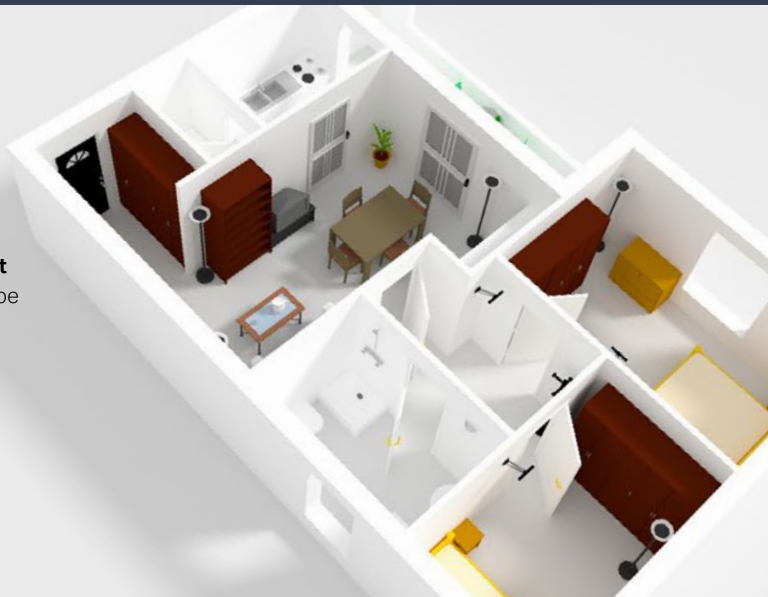
STEP 1

Enter the list of rooms from your floorplan

ARIA PLANNER will **automatically select the size of the heat recovery unit and required air flows** depending on room type and number of occupants.

It will then **create air flow balance** for a harmonised supply and exhaust ventilation system.

ARIA PLANNER will also **determine the number of supply and exhaust points (diffusers) for each room** and calculate the number of required ventilation ducts.



STEP 2

Choose the type of connection to heat recovery unit – SIDE or CENTRAL

You will receive a list of components and air supply requirements, all tailored to your home design

Lista mater. fakowa:		Cena wliczona:		
Numer katalogowy	Nazwa	Liczba (sztuka)	Cena netto (PLN/szt.)	Wartość netto (PLN)
822 378 001	Skrzynka rozprężna	15	304,82	4572,30
822 379 001	Skrzynka rozprężna	15	304,82	4572,30
830 022 001	Anemostat wypoziomy 125	8	38,92	311,36
830 022 001	Anemostat wypoziomy 125	8	38,92	311,36
830 021 001	Anemostat nawiewny 125	7	41,95	293,65
830 021 001	Anemostat nawiewny 125	7	41,95	293,65
830 075 000	Rura ARIA 75 - zwł. 50m	8	375,00	3000,00
830 075 000	Rura ARIA 75 - zwł. 50m	8	375,00	3000,00

STEP 3

Save and download your design



The design **contains calculated air flows, a bill of materials tailored to the selected configuration** as well as **guidelines on installation of the heat recovery system**. The document will indicate where and how to install diffusers, how to route ventilation ducts, and where to place the air intake and exhaust outlets. *

ARIA PLANNER IS AVAILABLE ON OUR WEBSITE www.heatpex.pl

* Full access to ARIA PLANNER is available for logged in users only

Complete product range available on heatpex.pl



HEATPEX Sp. z o.o.
ul. Chrzanowskiego 11,
80-278 Gdańsk, Poland
mob.: +48 661 693 697
e-mail: sales@heatpex.pl

> **heatpex.pl**



Download our
catalogues
and technical
documentation

This brochure, together with the information contained herein, is for informational purposes only and does not constitute an offer as defined in the provisions of the Civil Code. HEATPEX reserves the right to introduce content changes and without prior notice.